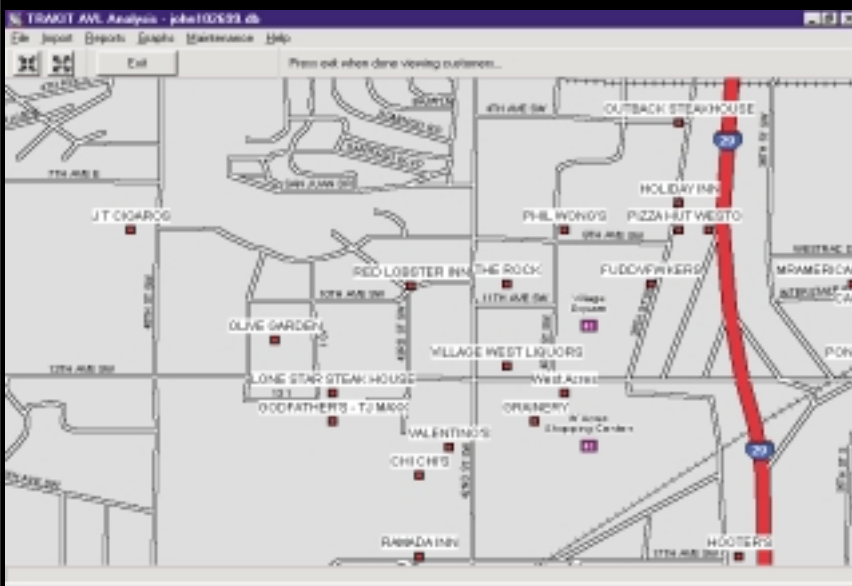


TRAKIT ROUTE ACCOUNT ANALYSIS



Knowing and recording how often and how long vehicles may be at specified sites can contribute dramatically to improving efficiency and to providing valuable cost analysis information. The TRAKIT ROUTE ACCOUNT ANALYSIS module contains a database of customers, accounts or any other site locations desired to be included. These sites are geo-referenced in the system. By processing the activity data for a vehicle, the system will recognize that the vehicle was at each referenced site, measure the amount of time it took to get to each site, record the time of each arrival and departure, and register how long the vehicle was at each site. Reports show the stop by site name and provide an at-a-glance summary of the route activity. Site duration times are compared to standard duration times in the system. Actual deviations from standard duration times can be analyzed quickly and accurately. Deviation times can be factored by cost standards to produce a cost value contribution to cost of goods sold or cost of operation analysis. Effective management of return of value from the site compared to the amount of time vehicles spend at the site can have tremendous impact on profitability.

FEATURES

- Analyze activity of fleet vehicles by each account or site
- Database of sites are maintained complete with geo-reference
- Processing of data registers vehicle being at each site
- Data is associated with the site
 - Arrival time
 - Departure time
 - Duration at site
 - Travel time to and from site
- Reports show stops with each site referenced by name
- Durations can be compared to standard durations from database
- Report-card type reports can be generated showing overall performance of drivers
- Duration deviations can be factored to produce cost value contributions to cost of goods sold or cost of operating analysis
- Files can be archived and data accumulated for future processing
- Get total time at each site for various time periods; week, month, etc.
- Database is easily exported and imported for use in common spreadsheets and databases