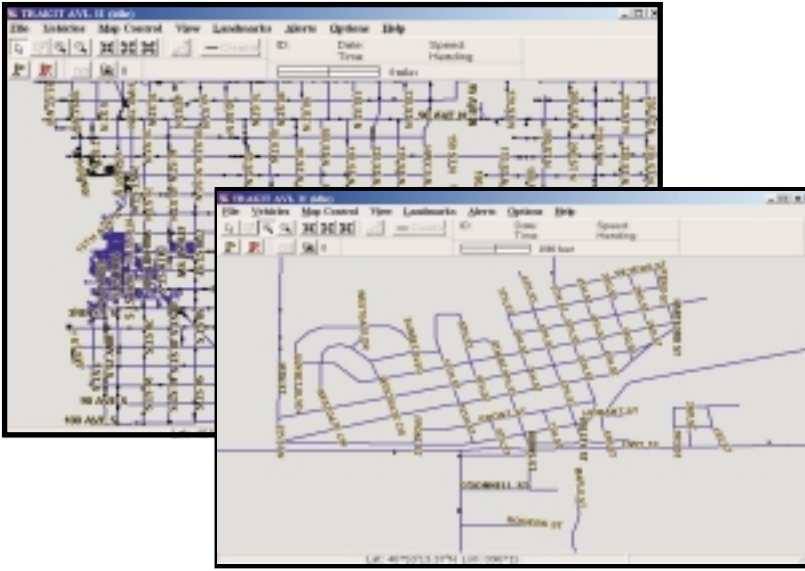




FEATURES



- TRAKIT monitoring using ESRI(Arcview) or Mapinfo maps
- Real-time monitor activity of an entire fleet of vehicles.
- Intelligent polling options
- Change vehicle position reporting and buffer parameters over-the-air
- User-customize zone and event alerts
- Extensive pan and zoom utility with automatic follow of specified vehicles
- Place custom landmark symbols and annotation on maps
- Point & Click feature associates custom database with landmarks
- Address search utility.
- Record location data in computer files for future analysis or documentation.
- Play back activity on-screen on the digital map
- Download data captured in the vehicle buffer over-the-air
- Available in single site, 5-seat and 10-seat network versions

Real-time fleet tracking using maps from ESRI shape (Arcview) or mid/mif (Mapinfo) sources. Once in a WGS84 and geodetic lat/long format they become a full-function backdrop for TRAKIT vehicle monitoring. Installed in the base computer dispatchers can have complete and up-to-the-second information on the location and status of any vehicles in the fleet. Closest vehicles can be sent to a job or progress along a route can be easily determined. The digital map can be easily customized with user landmarks and detailed annotation. Use the address search utility to find any address in the map database. TRAKIT intelligence provides maximum efficiency of the communications link by providing for only necessary transmissions to take place. Zone and event alerts advise the dispatcher of predetermined conditions that may require attention. If the vehicles are appropriately equipped messages can be exchanged between the base and vehicles. Capture location data in computer files for play back at a later time or for processing by the TRAKIT-ANALYZER module.

TRAKIT-II

Digital Map

- Import or overlay ESRI (Arcview) or Mapinfo map databases
- Complete USA map including Puerto Rico
- Numerous pan and zoom functions
- Place landmarks on map for visual reference
- Maintain multiple landmark layers simultaneously
- Place annotation labels on map
- Point & Click Data Feature for on-screen landmark database maintenance
- One primary and two secondary simultaneous map views
- Vehicle Info List tabular display showing text addresses of each vehicle
- Rectangular zone alerts
- Multiple alert types
- Address search
- Print map function

Vehicle Programming

- Alias identification
- 16 Vehicle icon selections
- Individual polling interval setting
- Bread-crumbs trail setting
- Over-the-air vehicle configuration setting
- Over-the-air vehicle buffer download

Real-Time Operation

- Monitor activity of all vehicles in the fleet
- Query current location of any vehicle